



BALTIC DIVING SOLUTIONS

TECHNICAL SPECIFICATIONS OF

Baltic Surveyor

BALTIC SURVEYOR



17

#SURVEY #DIVING #ROV #CTV
#ROV #CTV #UAV #UXO CLEARANCE



BALTIC SURVEYOR

Baltic Surveyor

Type of Vessel

DP Survey & ROV Vessel

Classification/Flag

Flag: Polish
Call sign: TBA
Home port: Gdynia, Poland
Builder: Fr. Schweers
Classification: DNV
Hull material: aluminium
Transit: 10 knots

Navigation Aids

Systems: 2 Gyros, 2 DGPS receivers, 2 Wind sensors
DP System: Navis DP-1 Specification
Chart system: Transas NaviSailor 4000 dual ECDIS
Marine Echo Sounder: FURUNO Navigational Echo Sounder FE-700

Tonnage & Dimensions

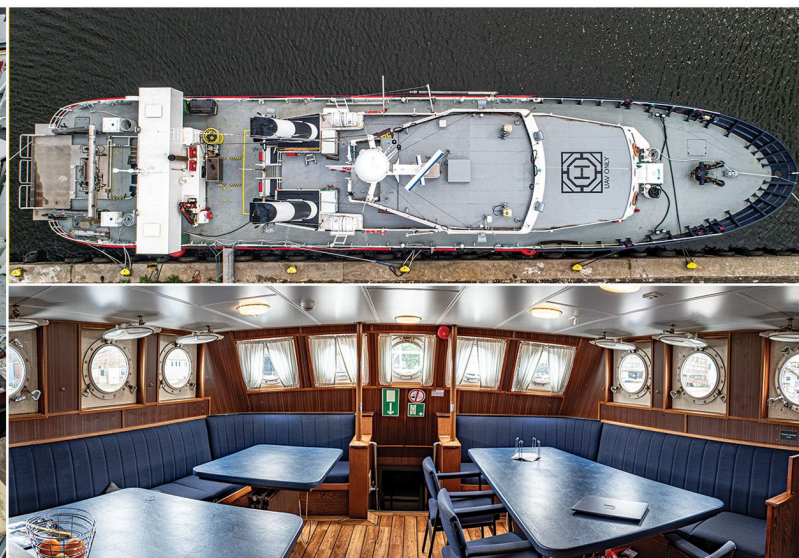
(GT) Gross Tonnage 258
(NT) Net Tonnage 77
Length: 38.4 m
Breadth: 7.8 m
Airdraft: 14.1 m
Draft: 2.1 m
Deck space: 40 m²

Engines

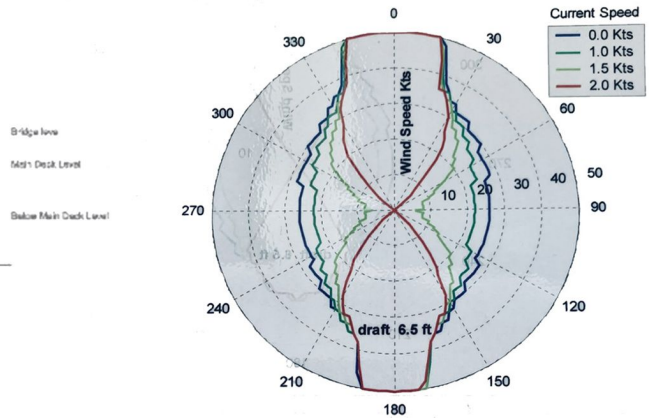
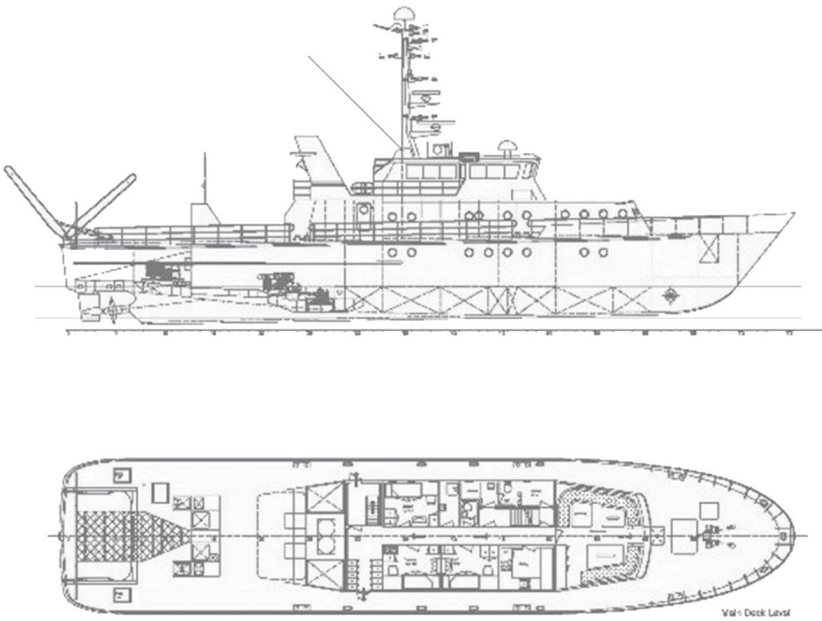
Main engine: 1 x 1000 kW CPP MWM TBD 604 V12
Auxiliary engines: 1 x 250 kW Deutz M413FR
1 x 300 kW Volvo D12
Thruster forward: 70 kW Jastram
Thrusters aft: 2 x 250 Kw Schottel pump jets Volvo D9

Deck and Survey Equipment

A-Frame: SWL 4 tons
Deck Crane: 0.65 t/m
Side poles: 2 poles for various over the side mounted equipment
Moonpool: 2 aft moonpools 600mm x 800mm
Deck Generator: 1 x 90 kW Cummins 6BT5, 9-D
Anti rolling: Passive anti rolling tank - 60% rolling reduction
ROV: Saab Seaeeye Falcon ROV
Survey room: 12m³ Survey room fully equipped



BALTIC SURVEYOR
GENERAL ARRANGEMENT



Propulsors:		Environment:
#1 Bow Tunnel thruster	100% thrust	Max wind speed : 50 Kts Current Speed: 0-2 Kts Collinear environment
#2 Port Pump Jet	100% thrust	
#3 Propeller	100% thrust	
#4 Sbd Pump Jet	100% thrust	

Capacity

Fuel tanks: 23000 l
Fresh water: 10000 l

Water Depth (LAT)

Multibeam (MB): 2.5 m*

Vessel Draft

Multibeam (MB): 2.1 m

Endurance Statement

10-15 days weather permitting (using ROV)
10-15 days weather permitting (MBES/SSS or other survey)

Fuel Consumption 24 h

Transit 2400 l
Survey operation 1000 l
DP/Rov 1500 l
WoW or alongside 250 l

Accommodation

Cabins: 5 single, 5 double
Total of 10 cabins, 15 persons

Vessel Contact Phone No.

Cell No.: +48 798 268 698
V-sat: +45 82136413
Iridium: +881632738819

DP operation

Wind: 12-15 m/sec
Sea state: max 1.7- 2 m*
Current: 1.8- 2.5 knots*
* subject to site specific conditions

Survey Operation Max Criteria

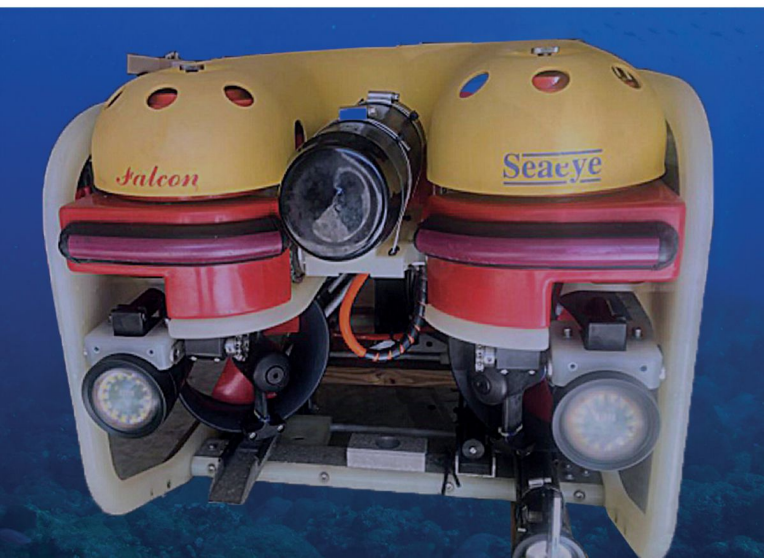
Launch & recovery

Wind: 12- 15 m/sec
Sea state: max 1.2-1.5 m*
Current: 1.3 knots
* subject to site specific conditions

Multibeam

Wind: 15 m/sec
Sea state: max 1.5- 2.0*
Current: 3 knots*

* depending on direction





BALTIC DIVING SOLUTIONS

OFFSHORE OPERATIONS

DIVING SERVICES

VESSEL CHARTERS

ROV INSPECTIONS

MARINE ENGINEERING

UXO RISK MIGRATION

PROJECT MANAGEMENT



BALTIC DIVING SOLUTIONS Sp. z o. o.



ul. Toruńska 10
84-230 Rumia, Poland



ul. Tadeusza Wendy 15
81-341 Gdynia, Poland



biuro@balticdivingsolutions.pl
+48 502 839 113



VAT No PL588-240-27-94
fb.com/BDSdiving

