



TOWIMOR

DECK MACHINERY



BUSINESS UNIT MARITIME

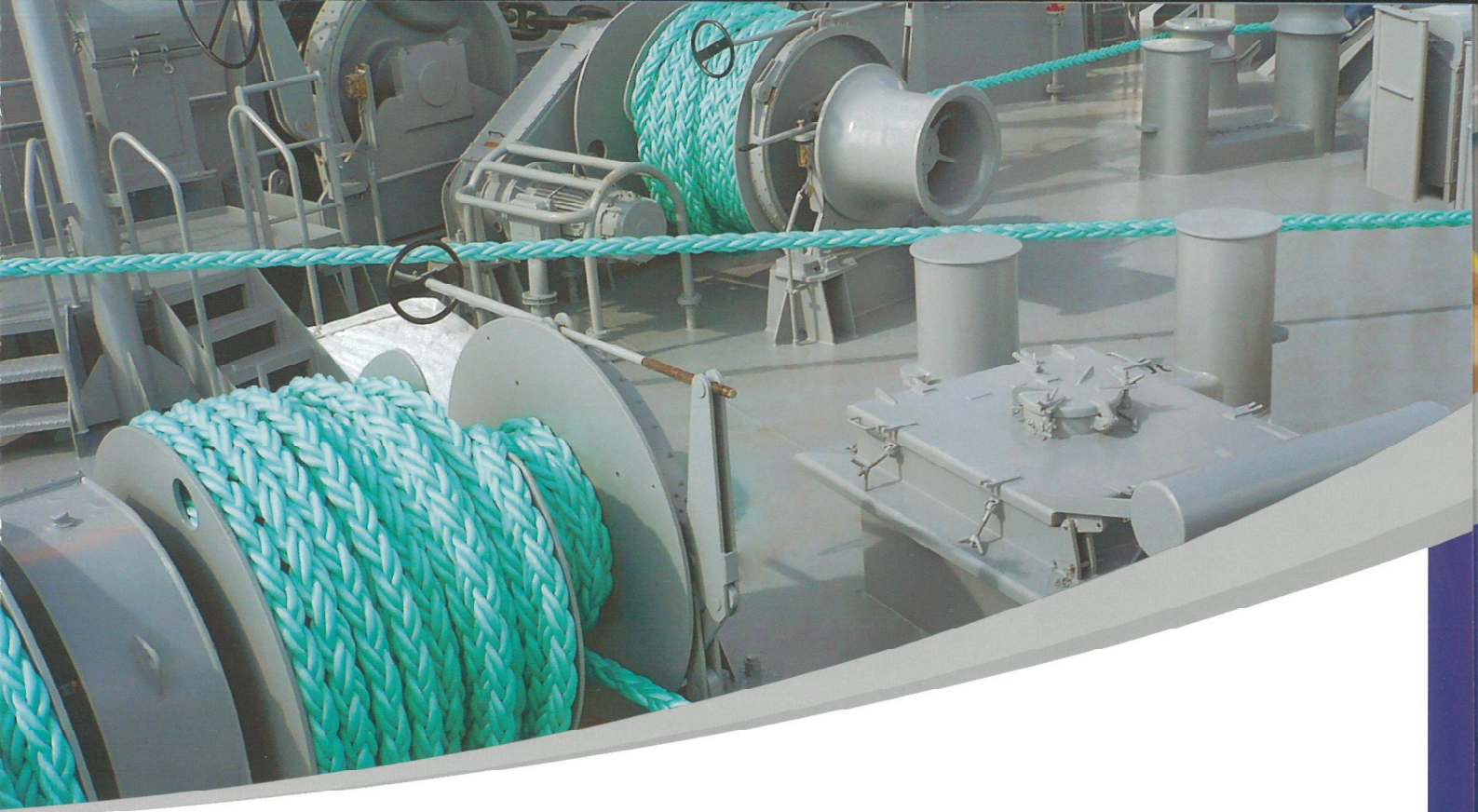
Towimor S.A. is a company with more than 50 years experience in design and manufacture of ships' deck equipment. We are proud that almost 4000 ships have been equipped with Towimor deck machinery. Our products meet all shipbuilding requirements thanks to close co-operation with Shipyards, Owners and Class Societies.

Our top priorities remain unchanged for years:

- highest quality
- safety and reliability in operation
- competitive design solutions
- continuous development

Always doing our best to meet Customers' satisfaction as a reliable business partner.





ANCHOR WINDLASS / MOORING WINCHES WITH ELECTRIC DRIVE

Type of ships: Container Carriers, Bulk Carriers, MPCs, Ro-Ro ships, Ferries, Passenger/Cruise ships

Mooring pull: 50 ÷ 350 kN

Windlass: 32 ÷ 132 mm K3/K2

Reduction gear:

enclosed type for mooring winches
open type with protection cover for windlasses

Drums: split or unsplit type for operation with synthetic or steel wire hawser

Brakes: controlled manually or hydraulically

Foundations recommended:

steel liners /resin chocks for anchor windlass/mooring winches
resin chocks or selfaligned – for mooring winches

Control:

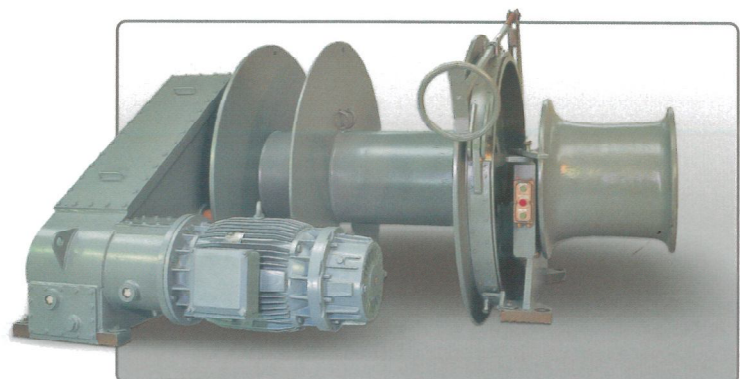
local
remote from shipside control stands and/or portable radio controller
push button controller for one man clutching installed as a standard on each drum and windlass

Type of drive:

electric pole change
electric frequency controlled

Operation mode:

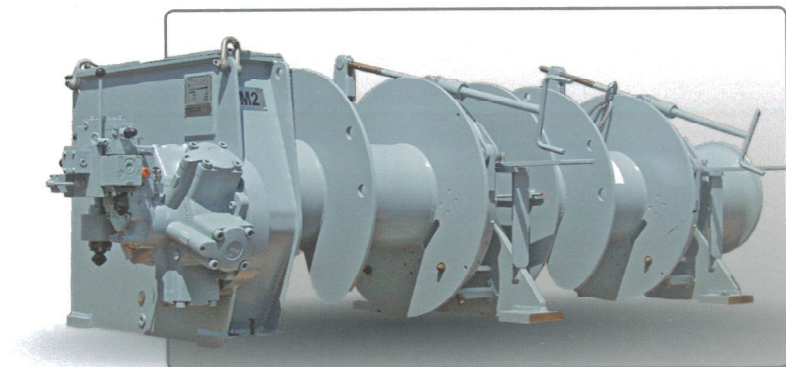
automatic
non-automatic

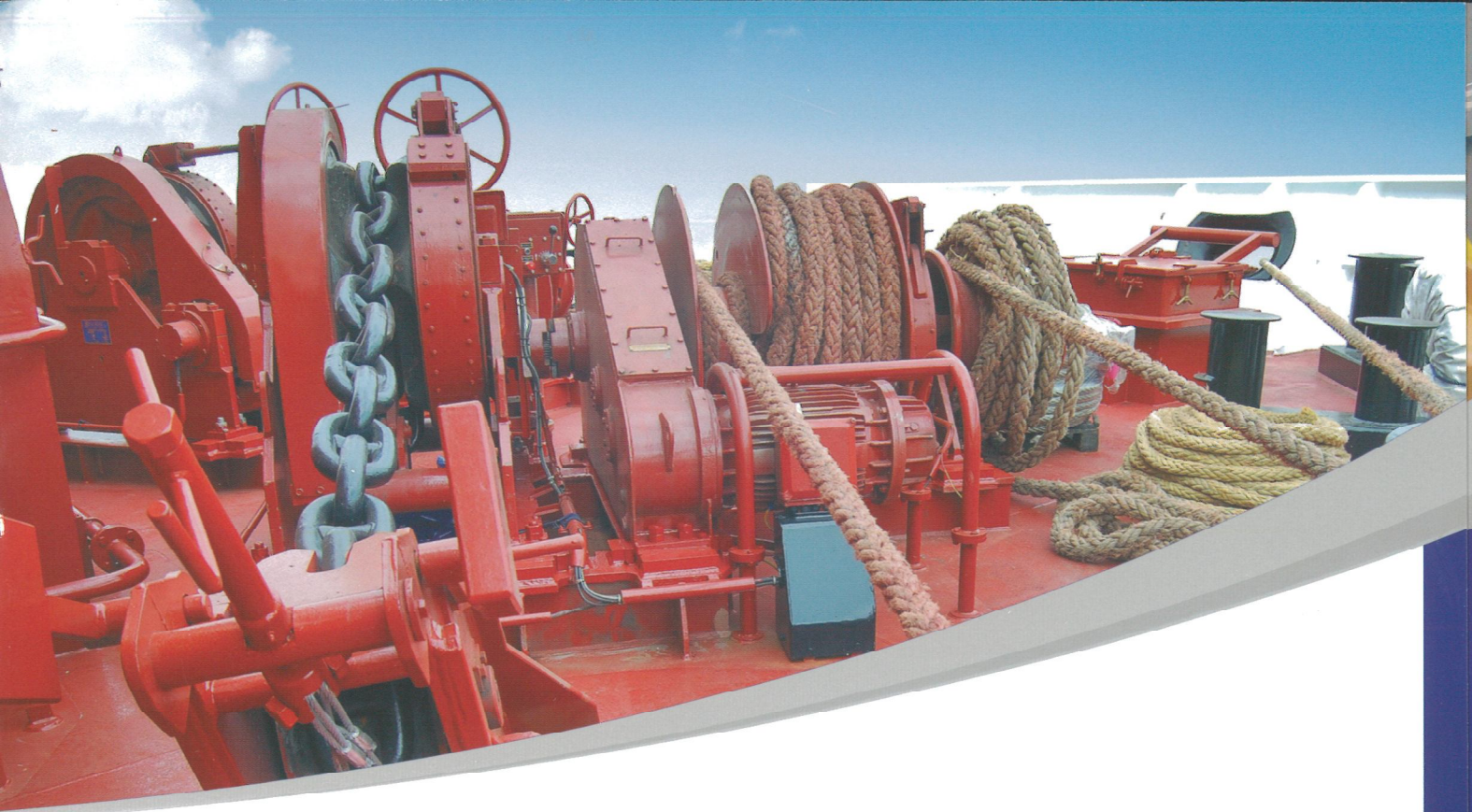




ANCHOR WINDLASS / MOORING WINCHES WITH ELECTROHYDRAULIC DRIVE

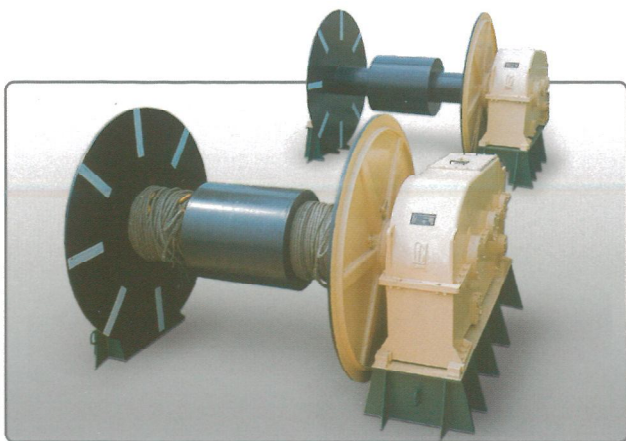
- Type of ships:** Tankers, Chemical carriers, LPG & LNG carriers
- Mooring pull:** 50 ÷ 350 kN
- Windlass:** 32 ÷ 132 mm K3/K2
- Reduction gear:**
 - enclosed type for mooring winches
 - open type with protection cover for windlasses
- Drums:** split or unsplit type for operation with synthetic or steel wire hawser
- Mooring brakes:** controlled manually or hydraulically
- Windlass brakes:** controlled hydraulically
- Foundations recommended:**
 - steel liners /resin chocks for anchor windlass/mooring winches
 - resin chocks or selfaligned – for mooring winches
- Control:**
 - local on control-valve block built-up on hydraulic motor
 - remote from shipside control stands
- Type of drive:**
 - high pressure
 - central supplied from hydraulic power packs
 - central supplied from ship's cargo pumps system
- Operation mode:**
 - automatic
 - non-automatic
- OCIMF recommendations**





OTHER DECK EQUIPMENT

- Anchor chain stoppers controlled manually or hydraulically
- Anchor chain end fastenings
- Cargo winches with electric or electro-hydraulic drive
- Towing winches with electric or electro-hydraulic drive
- Capstans with electric or electro-hydraulic drive



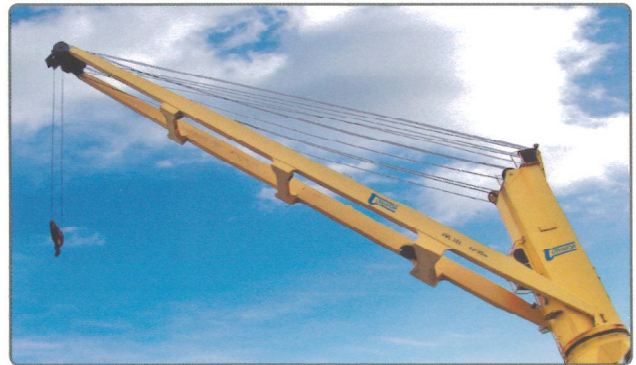


DECK CRANES

Service cranes with electro-hydraulic drive

Hose handling cranes with electro-hydraulic drive

Cargo cranes with electro-hydraulic drive





AFTER SALES SERVICE

Our service team is ready to be on board the ship in any port in the world to assist our Customers.

Towimor offers for its products :

- Skilled service engineers
- Commissioning
- Spare parts availability during machinery lifecycle
- Technical support
- Repairs
- Overhauls and upgrades
- Technical inspections



GLOBAL COMPANY

With over 100 years history Towimor has built its brand and developed into a worldwide supplier marine, offshore and industrial equipment.

Mission of our company is :

to provide our Customer with competitive products and services meeting your needs and expectations

Our main focus :

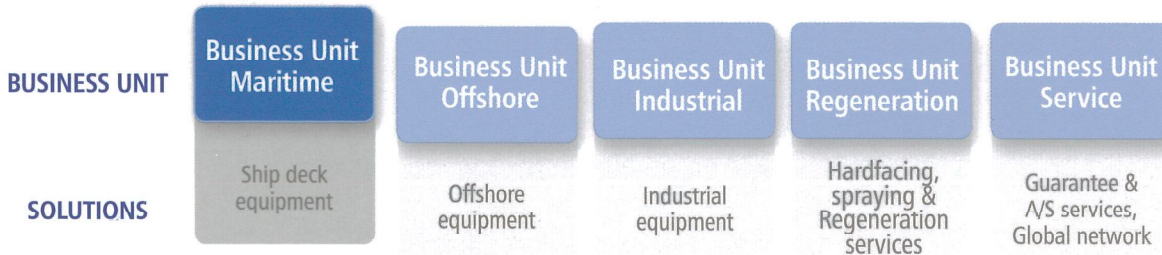
to be always one step forward to Customer and market requirements as a reliable business partner supporting your growth

BUSINESS UNIT MARITIME



STRATEGIC OBJECTIVE

BUSINESS STRUCTURE



TOWIMOR S.A.

Starotoruńska 5

87-100 Toruń

Poland

towimor@towimor.com.pl

www.towimor.com.pl